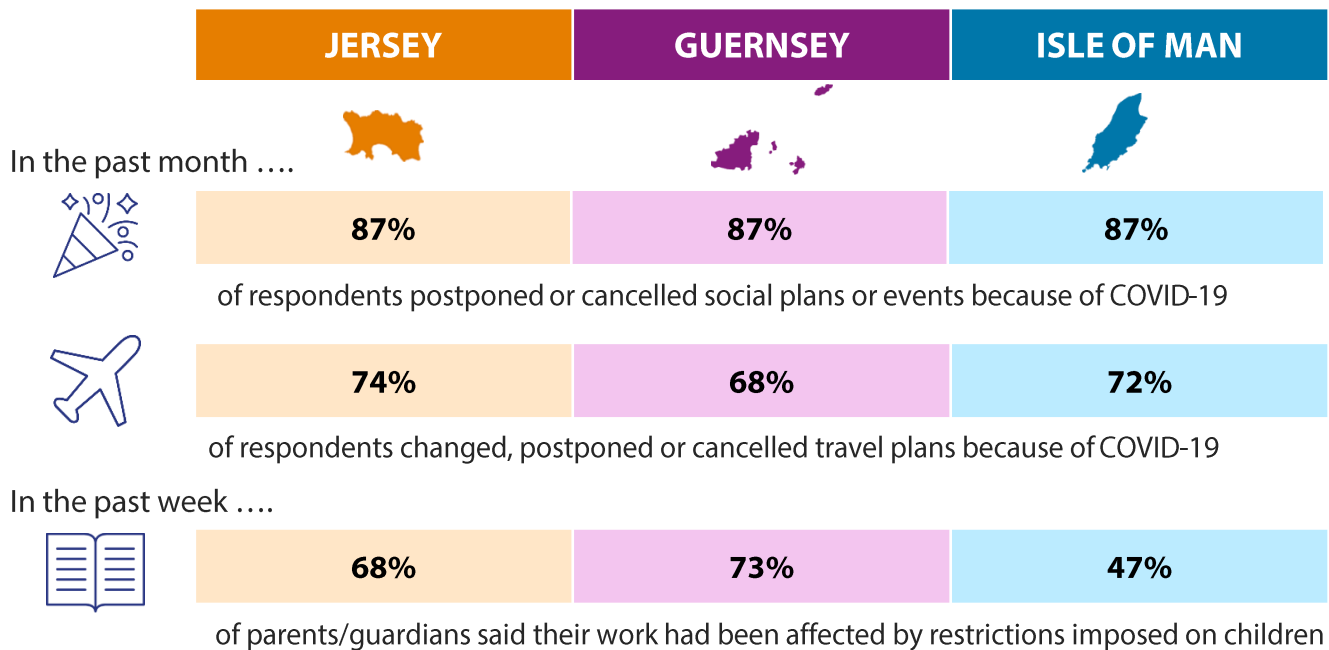


IMPACT OF COVID-19 ON OUR ISLANDS

(RESPONSES FROM 23-29 MARCH)



RESPONDENTS HAVE BEEN TAKING ACTION TO FOLLOW THE GUIDANCE IN THEIR ISLAND:

% respondents

Self-isolating

37%

30%

47%

Overall, more than a third have been self-isolating in the past week including a quarter of respondents under 30 and two-thirds of those aged 70+. Many had been doing so for more than 1 week.

'Definitely' social distancing

82%

78%

77%

Almost 80% of respondents who were not self-isolating reported definitely adhering to social distancing advice in the previous week. Almost everyone else said they had 'mostly' been doing so.

THANK YOU FOR HELPING EACH OTHER. IN THE PAST WEEK...



of respondents have been able to get **all or most of the essential grocery items** they wanted.



of respondents have **helped people** outside of their household because of COVID-19.

JOIN THE SURVEY

Island Global Research is running a similar survey each week to track the impact of COVID-19 on islanders in Jersey, Guernsey and Isle of Man.

You can take part here:

survey.islandglobalresearch.com/s3/COVID19-Mar30

The 'Impact of COVID-19' w/c 23 March survey was undertaken by Island Global Research between 24 and 29 March 2020. The survey was completed by 1,388 residents in the Crown Dependencies (541 Guernsey, 437 Jersey, and 410 Isle of Man).